



# HBD 35A-600A

## Semiconductor Fuses

### 半导体保护熔断器

Standard/ 标准: IEC 60269-4, GB/T 13539.4, UL 248-13

#### INTERRUPTING CAPACITY / 分断能力:

100,000 amperes at 700V AC  
50,000 amperes at 700V DC

#### TECHNICAL PARAMETERS/ 技术参数:

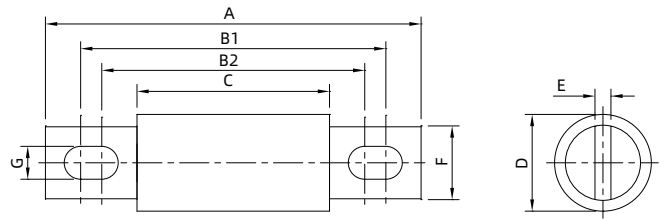
PART NO. 目录编号	CURRENT RATING 额定电流	SAFETY APPROVALS 安全认证	
		cURus	
HBD35	35A	○	
HBD40	40A	○	
HBD45	45A	○	
HBD50	50A	○	
HBD60	60A	○	
HBD80	80A	○	
HBD100	100A	○	
HBD125	125A	○	
HBD150	150A	○	
HBD200	200A	○	
HBD250	250A	○	
HBD300	300A	○	
HBD350	350A	○	
HBD400	400A	○	
HBD450	450A	○	
HBD500	500A	○	
HBD600	600A	○	

● DENOTES FOR APPROVAL  
○ DENOTES FOR PENDING

● 表示已取得安全认证  
○ 表示正在申请安全认证

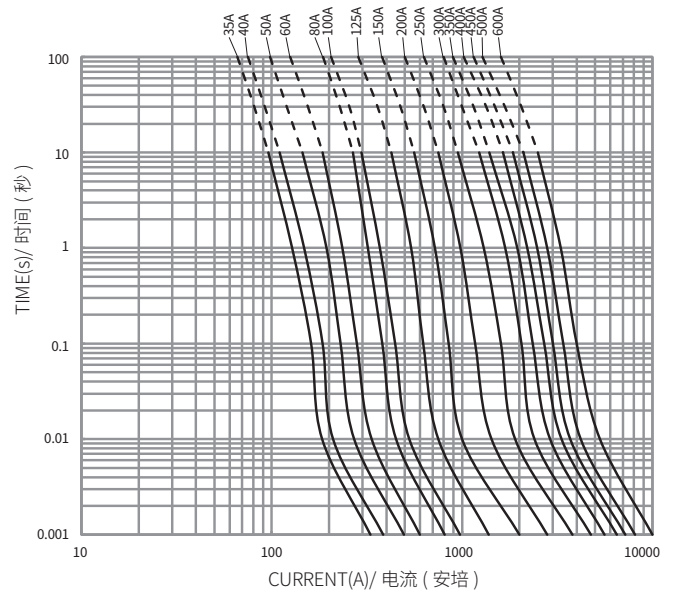
#### Dimensions/ 尺寸:

Unit 单位: mm



#### HBD 平均 I-T 曲线图 (仅供参考)

AVERAGE I-T CHARACTERISTICS CURVE  
(FOR REFERENCE ONLY)



额定电流 Current Rating A	尺寸 Dimensions(mm)							
	A±2	B1±2	B2±2	C±1.5	D±1	E±0.5	F±1	G±1
35A-60A	109	94	88.6	71	25	3.2	18	8.2
70A-100A	109	92.6	89	71	31	4.8	24	8.6
125A-200A	127	105	91.4	71	38	6.4	25.4	10.4
225A-400A	127	107	91.4	71	51	6.4	38	10.4
450A-600A	178	143.2	104.8	71	63.5	9.6	50	13.5